

BASIC SPECIFICATIONS	unit	G30-45-CNC	G30-60-CNC	G32-80-CNC	G32-100-CNC
specification					
Max Workpiece Diameter	mm	280	280	320	320
Max Grinding Diameter	mm	250		280	
Max Grinding Length	mm	450	600	800	1000
Max Workpiece Length	mm	450	600	800	1000
Max Workpiece Weight Capacity	kg	60		80	
GRINDING WHEEL					
Wheel Dimensions (Outer Diameter, Inner Diameter, Width)	mm	455 x (32~75) x 152.4 Optional 405x32~75x152.4 Optional 510x32~75x152.4			
Spindle Motor Power	kw/HP	5.5 / 7.5 (Optional 10)			
Grinding Wheel Speed	m/s	30			
Spindle Shaft Length	mm	62			
Bearing Type		Dynamic Pressure Bearing Spindle (Optional Bearing-Type Spindle)			
WORKHEAD					
type		Fixed, Sliding			
Headstock Model	No.	MT4			
Spindle Speed	rpm	50 ~ 300rpm		50 ~ 300rpm	
Spindle Power	kw/HP	1.5 / (2)		0.74/(1)	
TAILSTOCK					
Tailstock Model	No.	MT4			
Diameter	mm	54		58	
Travel	mm	32			
X-AXIS					
Travel	mm	320			
Max Feed Speed	mm/min	5000		4000	
Min Feed Unit	mm	0.001/0.01/0.10			
Feed Method		Angular			
Servo Motor Power	kw	1.5			
Rail Type		Rigid Dual V-Rail Base			
Z-AXIS					
Travel	mm	550	750	1000	1200
Feed Speed	mm/min	5000		4000	
Min Feed Unit	mm				
Servo Motor Power	kw	1.5		2.2	
Rail Type					
Swivel Angle		Clockwise Rotation by 4 degrees Counter-Clockwise Rotation by 9		Clockwise Rotation by 4 degrees Counter-Clockwise Rotation by 8 degrees	
OTHER SPECIFICATION					
Wheel Head Lube Pump	HP	1/4			
Coolant Pump	HP	1/4			
Guide Rail Lube Pump	W/HP	25			
Wheel Head Lube Reservoir	L	30			
Coolant Reservoir	L	120			
Guide Rail Lube Reservoir	L	8			
Machine Net Weight	kg	2600	2700	3600	3800
Machine Dimensions	cm	230/165/186		340/167/182	
"Can be elevated according to customer workpiece requirements"					
The company reserves the right to make changes to the appearance and specifications of the machinery.					

**EAST WIN MACHINERY INDUSTRIAL CO., LTD.**

No.89-1, Tianxin 3rd St., Daya Dist., Taichung City 428017, Taiwan (R.O.C.)

E-mail : eastwin.machinery@gmail.com

Tel : 04-25688518 Fax : 04-25691986

EW GA-30,32-CNC



# EWOM



EAST WIN MACHINERY

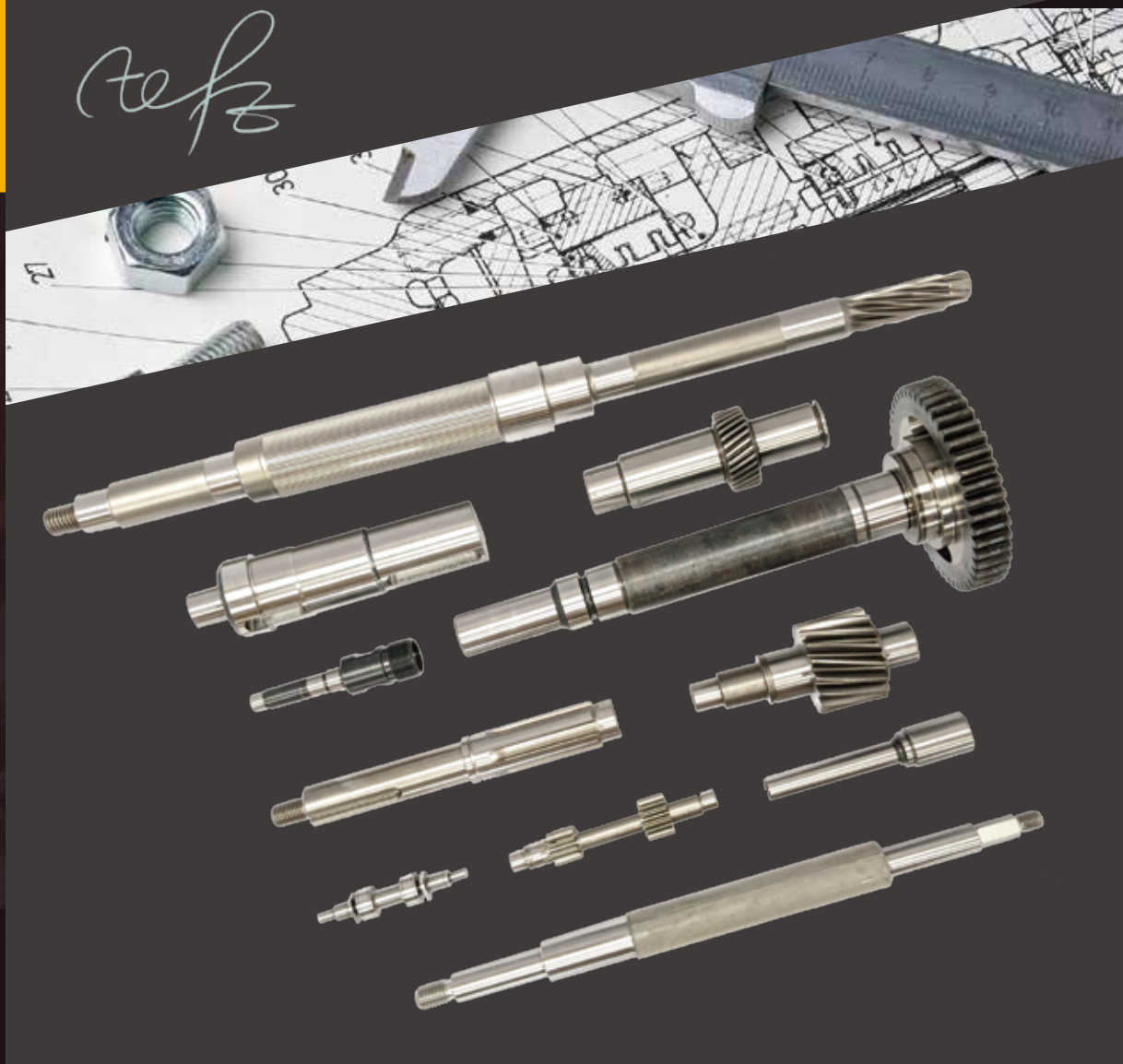


With over 30 years of industry experience, our team of professionals at East Win Machinery have been producing precision external and internal grinding machines, continually striving to provide our customers with excellent quality assurance, round-the-clock customer service and repairs.

Through the decades, our commitment and dedication to design and production have led us from our beginnings in traditional machining to our expertise and specialization in precision CNC grinders.

East Win offers a wide range of machine models and accessory parts in order to meet the particular needs and requirements of each of our valued customers.

East Win Machinery:  
Professional. Reliable. Durable. Expertise Meets Innovation.



Professional Stable Durable



EW45 . EW60



Solid Experience Innovative and Forward-Thinking

Professional  
Stable

專業  
穩定

DURBLE

耐用



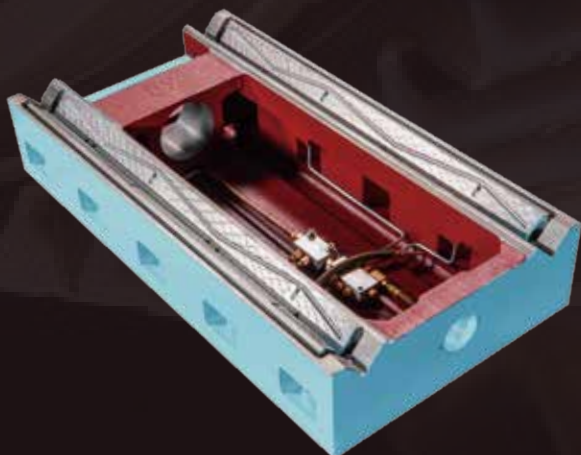
Base Rails: Each rail is hand scraped by an expert craftsman, ensuring perfect fit and lubrication, as well as significantly extending rail durability and lifecycle.



## Rigid Dual V-Rail Base

Steadier Axial Feed

Rigid Dual V-Rail Base Design Construction:  
Optimized for maximum rigidity  
and stability during operation.  
Wear-resistant strips are applied for increased longevity.



# Optional Accessories:

## Automatic Touch Probe

Accurately measures workpiece dimensions, ensuring precise surface grinding and shortening production time .



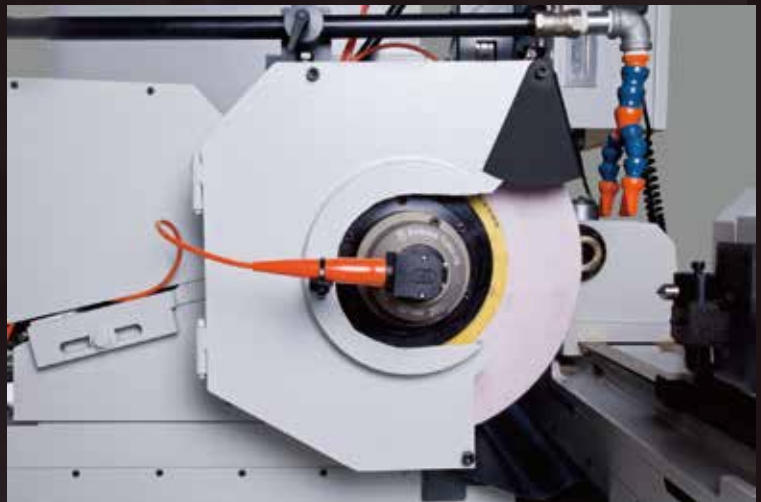
## Automatic Touch Probe

Accurately measures workpiece inner and outer diameters, ensuring precise surface grinding and shortening production time.



## Balance Systems Automatic Grinding Wheel Balancing

Designed and made in Italy, this system can be attached at the wheel flange or interior shaft. It allows for wheel balancing and grinding operations to occur simultaneously, greatly increasing precision and longevity.



## Balance Systems Acoustic Emission Sensors

Measures and monitors acoustic frequencies produced during grinding.

- G Function detects sub-micrometric contacts
- Anti-crash - constantly monitors work progress, prevents collisions
- Provides feedback signals for adaptive control



# Professional Stable Durable



Ball Bearing Grind Wheel Spindle: High precision GMN bearings used in conjunction with lubricating oil recirculation. Optimized for precise high speed operation.



## Wheel Head:

Spindle and bearings are kept lubricated by a velocity pressure system. The lubricant is then fan cooled inside its reservoir. Safety devices help prevent leakages.



## WORK HEAD:

Heavy duty cast iron construction. Spindle is supported by precision angled ball bearings.

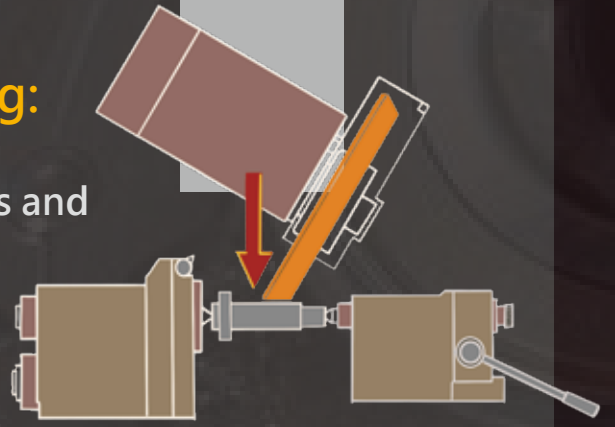


## Tailstock:

Rigid cast iron construction with lubricated heat-treated spindle. Design compatible with various safety devices. Hydraulic tailstocks also available.

## Angular Wheelhead Grinding:

For more intricate designs and workpiece end surfaces.



## Straight Wheelhead Grinding:

For cylindrical grinding.

